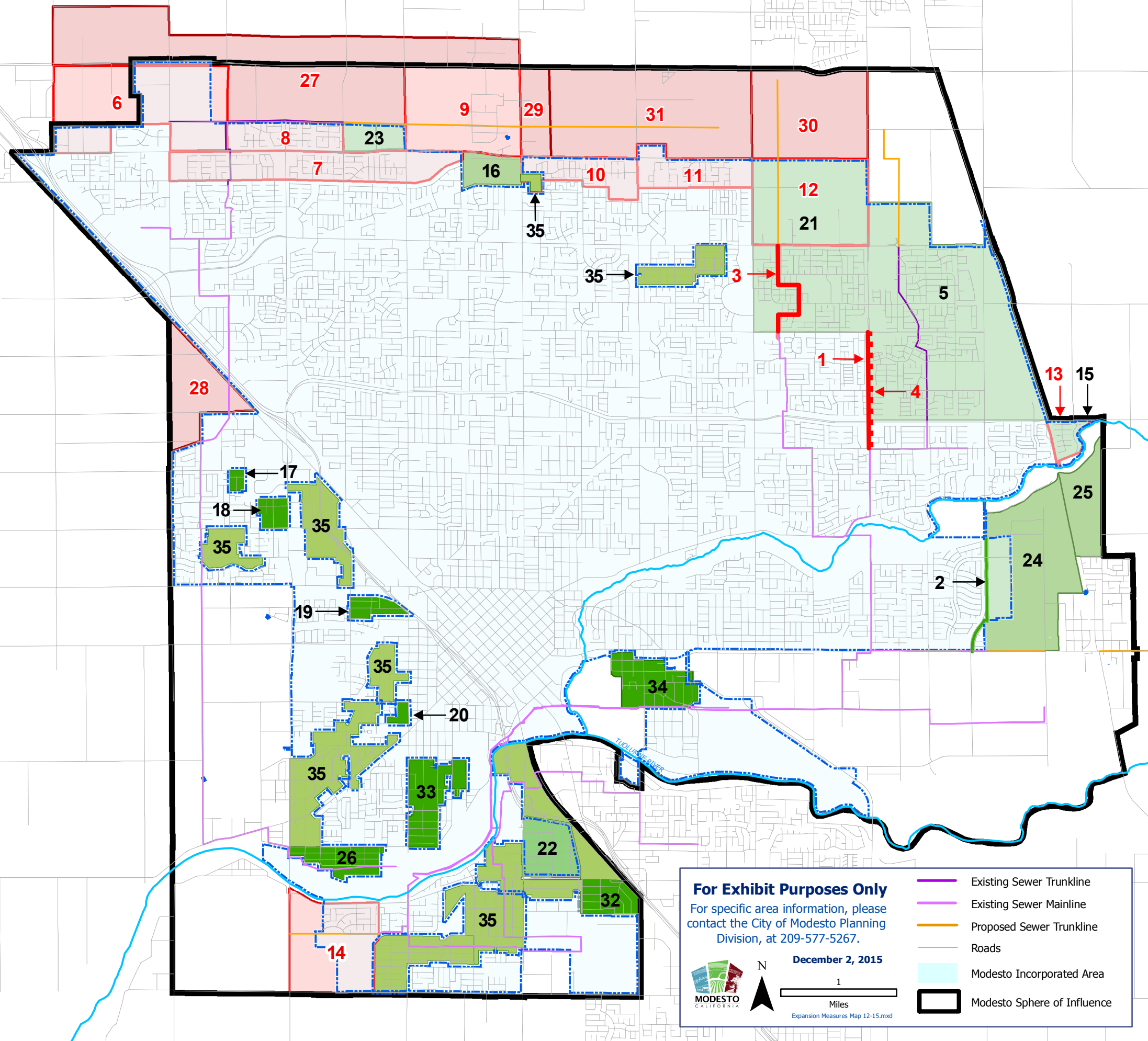


# City of Modesto Public Advisory Elections



**For Exhibit Purposes Only**  
 For specific area information, please contact the City of Modesto Planning Division, at 209-577-5267.  
 December 2, 2015  
 Expansion Measures Map 12-15.mxd

- Existing Sewer Trunkline
- Existing Sewer Mainline
- Proposed Sewer Trunkline
- Roads
- Modesto Incorporated Area
- Modesto Sphere of Influence

- Rejected Measure B: Nov. 1981
  - 1: Lakewood Sewer Extension
- Approved Measure: Nov. 1984
  - 2: Yosemite Sewer Extension
- Rejected Measure: Nov. 1984
  - 3: Sonoma Sewer Extension (To Roselle Neighborhood)
- Rejected Measure B: Nov. 1986
  - 4: Lakewood Sewer Extension (To Merle Neighborhood)
- Approved Measure F: Nov. 1990
  - 5: Village One
- Rejected Measure P: Nov. 1997
 

<span style="background-color: lightpink; border: 1px solid black; display: inline-block; width: 15px; height: 10px;"></span> 6: Kiernan Business Park	<span style="background-color: lightpink; border: 1px solid black; display: inline-block; width: 15px; height: 10px;"></span> 8: Carver-Bangs
<span style="background-color: lightpink; border: 1px solid black; display: inline-block; width: 15px; height: 10px;"></span> 7: Pelandale/Snyder	<span style="background-color: lightpink; border: 1px solid black; display: inline-block; width: 15px; height: 10px;"></span> 9: Kiernan/McHenry
- Rejected Measure Q: Nov. 1997
 

<span style="background-color: lightpink; border: 1px solid black; display: inline-block; width: 15px; height: 10px;"></span> 10: Coffee/Claratina	<span style="background-color: lightpink; border: 1px solid black; display: inline-block; width: 15px; height: 10px;"></span> 13: The Bluffs
<span style="background-color: lightpink; border: 1px solid black; display: inline-block; width: 15px; height: 10px;"></span> 11: North Beyer	<span style="background-color: lightpink; border: 1px solid black; display: inline-block; width: 15px; height: 10px;"></span> 14: Fairview
<span style="background-color: lightpink; border: 1px solid black; display: inline-block; width: 15px; height: 10px;"></span> 12: Roselle-Claribel SW	
- Approved Measure: Nov. 1998
  - 15: Bent Creek Estates
- Approved Measure: Nov. 1999
  - 16: Pelandale/McHenry
  - 17: Rosemore/Cox Infill Area
  - 18: Carpenter/Shaddox Infill Area
- Approved Measure O: Nov. 2001
  - 19: Westside Infill Area
  - 20: Southwest Infill Area
- Approved Measure N: Nov. 2001
  - 21: Roselle-Claribel SW (Tivoli SP)
- Approved Measure N: Nov. 2003
  - 22: Shackelford Neighborhood Infill Area
- Approved Measure M: Nov. 2003
  - 23: Kiernan/Carver (Woodglen)
- Approved Measure L: Nov. 2003
  - 24: Empire North Unit Two
  - 25: Johansen CPD
- Approved Measure D: Nov. 2004
  - 26: Robertson Road Infill Area
- Rejected Measures: Nov. 2009
 

<span style="background-color: lightpink; border: 1px solid black; display: inline-block; width: 15px; height: 10px;"></span> 27: Kiernan/Carver Corridor (Meas. A)
<span style="background-color: lightpink; border: 1px solid black; display: inline-block; width: 15px; height: 10px;"></span> 28: College West (Meas. B)
<span style="background-color: lightpink; border: 1px solid black; display: inline-block; width: 15px; height: 10px;"></span> 29: Hetch-Hetchy CPD Regional Commercial (Meas. C)
<span style="background-color: lightpink; border: 1px solid black; display: inline-block; width: 15px; height: 10px;"></span> 30: Roselle-Claribel NW Quadrant (Meas. D)
<span style="background-color: lightpink; border: 1px solid black; display: inline-block; width: 15px; height: 10px;"></span> 31: Hetch-Hetchy CPD Village Residential (Meas. E)
- Approved Measure L: Nov. 2010
  - 32: Parklawn Neighborhood Infill Area
- Approved Measure N: Nov. 2011
  - 33: Rouse-Colorado Neighborhood Infill Area
- Approved Measure M: Nov. 2013
  - 34: Airport Neighborhood
- Approved Measure H: Nov. 2015
  - 35: County Islands